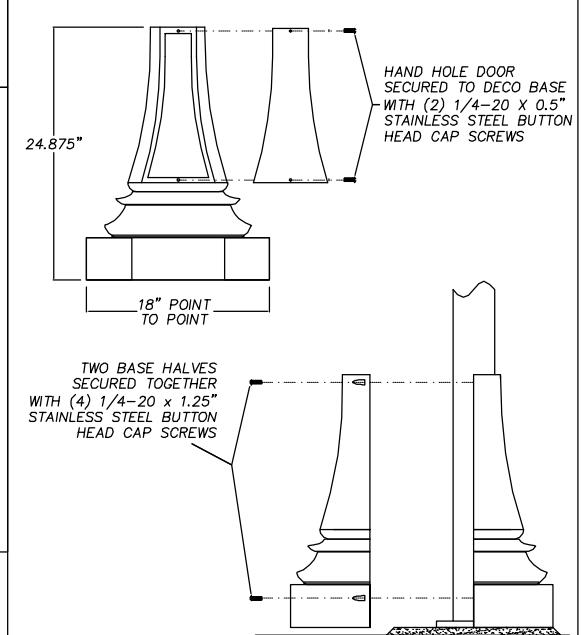
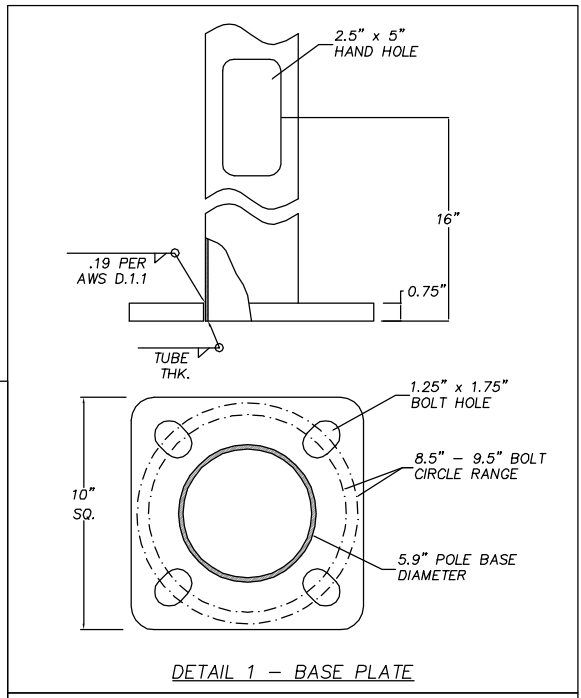
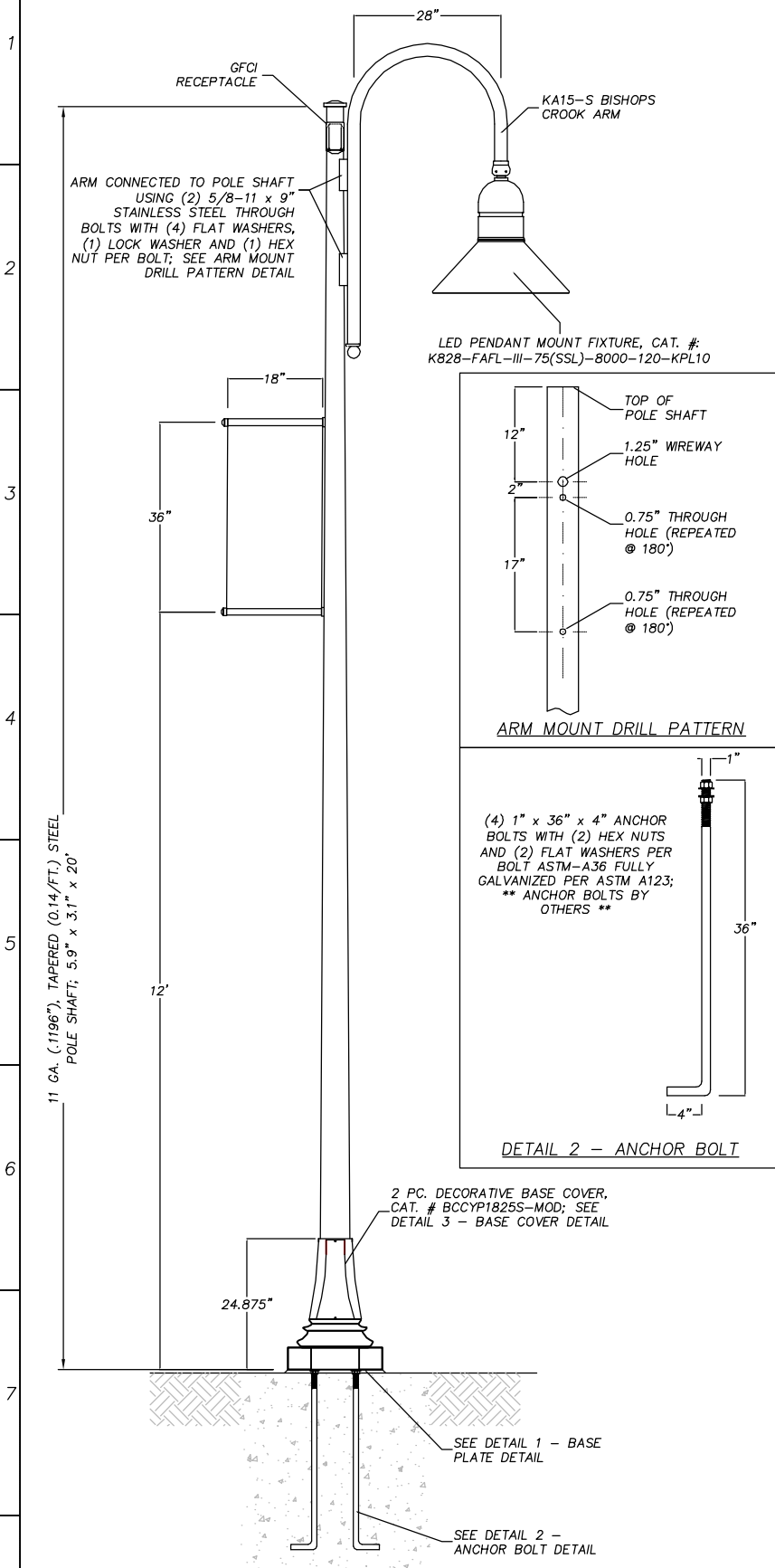
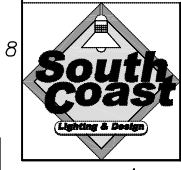


CAT. #: BCCYP1825S-MOD/590A200/KA15-S/K828-75W-LED

REV.	REV. #	REVISION NOTE	DATE	CHECKED BY
A	1	ADD GFCI	2.7.14	M.K.



- DESIGN/FINISH SPECIFICATIONS**
- * ALL HARDWARE TO BE STAINLESS STEEL
 - * ALL WELDS IN ACCORDANCE WITH AWS WELDING CODE
 - * ALL STEEL COMPONENTS GALVANIZED BEFORE FINISH PAINTED
 - * FINISH COAT TO BE SEMI-GLOSS BLACK PER CUSTOMER SPECIFICATIONS
 - * POLE DESIGNED PER AASHTO 2001, 100MPH WITH A 1.3 GUST PER PLACER COUNTY SPECIFICATIONS



SOUTH COAST LIGHTING & DESIGN
 1391 CALLE AVANZADO, SAN CLEMENTE, CA. 92673
 VOICE - 949.276.8850 / FAX - 949.276.8855
 GARYK@SOUTHCOASTLIGHTING.COM / WWW.SOUTHCOASTLIGHTING.COM
 DUE TO CONTINUING IMPROVEMENTS, SOUTH COAST LIGHTING & DESIGN, INC RESERVES THE RIGHT TO CHANGE DIMENSIONS, DESIGNS, AND CONSTRUCTION FROM THAT WHICH IS SHOWN IN THIS BROCHURE. CONTACT FACTORY FOR DETAILED ENGINEERING DRAWINGS

DRAWN BY: R.R.	CHECKED BY: --	APPROVED BY: --	CATALOG #: SEE TOP OF PAGE	DATE: 1.23.14
CUSTOMER: PLACER COUNTY			PROJECT NAME: KINGS BEACH - COMMERCIAL CORE	SHEET NUMBER: 1 OF 1
			DRAWING NUMBER: R-012314-2S	